



# COMPANY PROFILE

M/s. KOHINUR ENGINEERING SOLUTIONS



# TABLE OF CONTENTS



## TABLE OF CONTENTS

• INTRODUCTION, OUR VISION, OUR MISSION	4
• BUSINESS SEGMENTS	5
• IMPORTER & SUPPLIER	6
• PROJECT HISTORY	7
• HEALTH AND SAFETY POLICY STATEMENT, PROJECT QUALITY PLAN	8
• PHOTO GALLERY	9
• PHOTO GALLERY	10
• PHOTO GALLERY	11
• PHOTO GALLERY	12
• OUR CLIENTS	13
• CONTACT US	14

## INTRODUCTION

---

KOHINUR ENGINEERING SOLUTIONS. Is an electrical and mechanical company in Bangladesh specializing in design, build, construct, supply, install, service, maintenance of electro-mechanical systems, utilities and equipment.

As an electrical and mechanical service company, KOHINUR ENGINEERING SOLUTIONS (KES) Places great emphasis on its relationship with clients, private or commercial, and pride ourselves on the ability to respond to your contracting requirements in an efficient and cost effective way.

Our sound knowledge of Industry allows us to be hands on in every aspect of the job from the beginning to end.

## OUR VISION

---

To become one of the leading and most reliable Engineering contracting companies in Bangladesh.

## OUR MISSION

---

Guided by our vision we shall deliver high-quality, cost-effective projects on schedule and enhance our client's satisfaction through continuous improvement of our business practices in terms of safety, quality, service delivery as well as sound environmental awareness policies.



## BUSINESS SEGMENTS

---

### ELECTRICAL: (PROJECT WORKS)

---

- TRANSFORMER AND PANEL ERECTION. (HV, LV).
- SUB STATION ERECTION & COMMISSIONING
- CABLE LAYING AND TERMINATION WORK. (HT, LT, CONTROL, SIGNAL).
- LIGHTING WORK (INDOOR & OUTDOOR)
- POWER DISTRIBUTION SYSTEM. (MCC, PCC, LDB).
- ELECTRICAL INSTRUMENT SET UP.
- AIR CONDITION.
- OVER HEAD CRANE ERECTION AND COMMISSION.
- CABLE TRAY FABRICATION & ERECTION



---

### MECHANICAL: (PROJECT WORKS)

---

- OVERHEAD CRANE ERECTION & COMMISSIONING.
- STEEL STRUCTURE FABRICATION & ERECTION.
- STAIR WORK.
- PIPE LINE WORK.
- MACHINE ALIGNMENT.
- FENCING FABRICATION & ERECTION WORK.
- STEEL TANK FABRICATION & ERECTION WORK.
- INSULATION WORK.
- CABLE TRAY FABRICATION & ERECTION WORK.

---

### INTERIOR DESIGN WORK

---

- FALSE CELLING WORK.
- THAI ALUMINIUM WORK.
- SWING DOOR.
- TEMPERED GLASS WORK.



## IMPORTER & SUPPLIER

---

### MAGNETIC CONTACTOR & KIT

- Allen Bradley, Fuji, Hundai, Seimens

### BBT SYSTEM

### TEMPRATURE MEASUREMENT

- Temperature Transmitter With Display
- Head Mounted Terperature Transmitter
- RTD & Thermocouple
- Temperature Gauge

### PRESSURE MEASUREMENT

- Inline Gauge & Absulate Pressure Transmitter
- Differetial Pressure Transmitter
- Analogue Pressure Transducer
- Mini Compact Pressure Transmitter
- Pressure Gauge

### AUTOMATION & CONTROL

- DCS & SCADA
- HMI
- PID Controllers
- PLC

### CONTROL VALVE & SPARE PARTS

- Linear Globe or Angle Control Valves
- Rotary Butterfly Control Valves
- Rotary Ball Control Valves
- Rotary Plug Control Valves
- Valve Positioner
- Electric Actuator
- Pneumatic Actuator

### ACB, VCB, MCCB, RCCB, MPCB, MCB, SMPS, VFD

- Allen Bradley, Fuji, Hundai, Seimens

### FLOW MEASUREMENT

- Electromagnetic Flow Meter
- UltraSonic Flow Meter
- Differential Pressure Flow Meter
- Vortex Flow Meter

### LEVEL TRANSMITTER

- Float Type Level Transmitter
- Ultrasonic Level Transmitter

### PANEL (HT & LT)

- HT Panel (6.6 KV, 11 KV, 33 KV)
- LT Panel (MCC, PCC, SDB, LDB, MLDB, Soft Starter Panel)
- PFI Panel

### MANUAL VALVE

- Ball Valve
- Butterfly Valve
- Gate Valve
- Globe Valve
- Check Valve



 Fuji Electric

 HYUNDAI  
ELECTRIC

# PROJECT HISTORY

## **GPH ISPAT LTD (ROLLING PLANT)**

- CABLE LAYING.
  - TERMINATION.
  - PANEL INSTALLATION.
- UNDER SYSCON ENGINEERING LTD.

## **GPH ISPAT LTD (MELTING PLANT)**

- LT CABLE LAYING WORK.
- HT CABLE LAYING WORK.
- TERMINATION WORK.
- Cable Tray Work

## **GPH ISPAT LTD (SUB STATION)**

- LT CABLE LAYING WORK.
- HT CABLE LAYING WORK.
- TERMINATION.

## **GPH ISPAT LTD (WATER TREATMENT PLANT)**

- LT CABLE LAYING WORK.
- TERMINATION.
- PANEL INSTALLATION.

## **Infinia Spinning Industries Ltd**

- HT CABLE LAYING WORK.

## **SHAH CEMENT INDUSTRIES LTD.**

- Insulation Work (4th Mill)

## **C.P. BANGLADESH CO. LTD. (FEED MILL)**

- Steel structure fabrication & Erection work.

## **JMI LPG Plant**

- Interior Design Work

## **S.ALAM STEEL MILL LTD**

- Rewinding Line's Machine erection & Hydraulic Pipe Line works.

## **Abul Khair Steel Products Ltd**

- HT CABLE LAYING WORK.
- LT CABLE LAYING WORK.
- TERMINATION.

## **Epyllion Knitwears Ltd**

- LT CABLE LAYING WORK.

## **Unique Industrial Handlers Pvt. Ltd**

- Crane Unloading
- Crane Shifting
- Crane Erection and Commissioning
- Crane Load Testing

## **BSRM Wires Ltd**

- Installation & Erection of Street Light Work
- Cable Laying
- Pole dismantling and Removing
- Plant Office Electrical Erection Work

## **SS STEEL LTD.**

- EOT Crane Panel Erection, Cable Laying, Termination, Commissioning

## **ABUL KHAIR STEEL MELTING LTD**

- Auto Rolling Shutter works. (EF1, EF2)

## **ABUL KHAIR STEEL & POWER LTD**

- Interior Design Work

## **ABUL KHAIR STRIPS PROCESSING LTD**

- Steel structure fabrication & Erection work.
- Stair Works.
- LT & Control Cable Laying & Termination
- LT Panel Erection & Removal work

## **Astron Enterprise**

- Electrical wiring, Lighting, Cable laying, Termination Earth pit, SDB, MDB Erection & Commissioning.

## HEALTH AND SAFETY POLICY STATEMENT

KOHINUR ENGINEERING SOLUTIONS. Firmly believes in the significance of health and safe working practices of our employees, as it forms the fundamental part of the effectiveness and efficiency to our management. Furthermore, as an organization and the employer, we do acknowledge our commitment, so far as is reasonably, in ensuring for the health and safety of our employees, public health and not to endanger our environment.

### **Our statement of general policy is:**

- To provide adequate control of the health and safety risks arising from our work activities.
- To consult with our employees on matters affecting their health and safety.
- To provide and maintain safe plant and equipment.
- To ensure safe handling and use of substances.
- To provide information, instruction and supervision for employees.
- Training:
- To prevent accidents and cases of work-related ill health.
- To maintain safe and healthy working conditions; and
- To review and revise this policy as necessary as regular intervals.

### **All employees have to:**

- Co-operate with supervisors and managers on health and safety matters.
- Take reasonable care of their own health and safety and report all health and safety concerns to an appropriate person.

## PROJECT QUALITY PLAN

The purpose of this quality plan is to define specific key requirements related to quality performance and ensures a thorough understanding of such of all projects parties concerned. Through project quality plan awareness and implementation the performance of the engineering, procurement construction and support functions may effectively and efficiently achieve their objectives and provide the client with a project that fulfills their quality requirements and expectations.

### **The PQP activities are the below:**

- Mobilization.
- Engineering.
- Procurement and material management.
- Planning.
- Execution.
- Quality control.
- Contracts administration.
- Document control.
- Warehousing.
- Site administration.

And ensuring that these related activities are planned, implemented and control their progress and effectiveness is monitored.



## PHOTO GALLERY



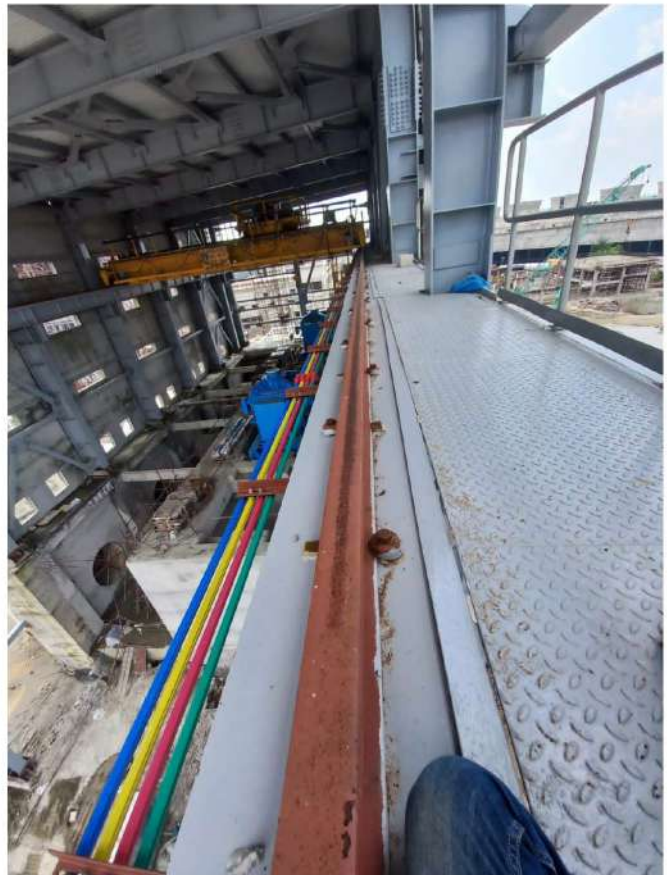
HT, LT, Control, Signal Cable Laying, Termination, Joint & cable tray erection work  
Project: GPH Ispat Rolling and Melting (New Project)

Client: GHP Ispat Limited

Location: Mosjidda, Sitakundu, Chattogram



## PHOTO GALLERY



Rail, DSL Erection, EOT Crane Erection, Commissioning, Load Testing Work.

**Project:** Maitree Super Thermal Power Project (2X660 MW)  
Bangladesh India Friendship Power company (Private) Limited

**Address:** Rampal, Bagerhat , Khulna, Bangladesh

**Client:** Unique Industrial Handlers Pvt. Ltd.

## PHOTO GALLERY



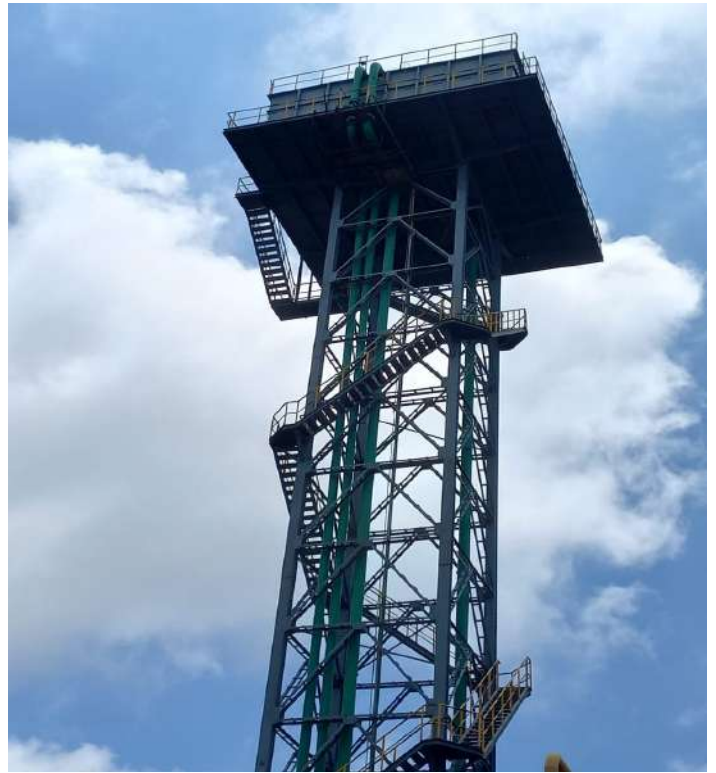
Electrical wiring, Lighting, Cable laying, Termination Earth pit, SDB, MDB  
Erection & Commissioning.

Project Name: UAB Hanger, Zahurul Haque Base, Chittagong Air Force

**Client:** Astron Enterprise



## PHOTO GALLERY



Structure erection fabrication, Stair, Purlin, Pipe line, Rewinding line, Insulation work  
Project: ABUL KHAIR Group

# OUR CLIENTS

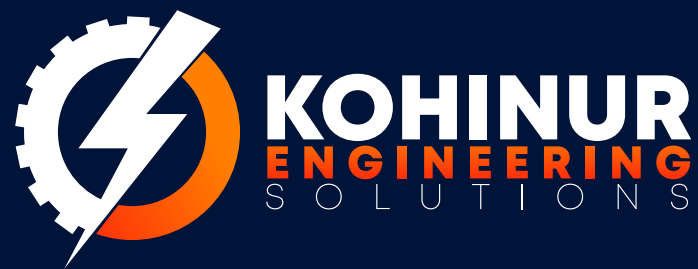


Abul Khair Steel Products Ltd



**Astron  
Enterprise**





# CONTACT US

## MOBILE NUMBER

+8801720886850

+8801675890345

## ADDRESS

Dhaka Office: 51,51/A, Purana Paltan (6th Floor), Dhaka, Bangladesh.

Chattagram Office: Finlay House, 5th Floor (lift 4), in front of the lift. Agrabad, Chattagram, Bangladesh.

## MAIL US

contactkesbd@gmail.com

## WEBSITE

www.kesbd.com